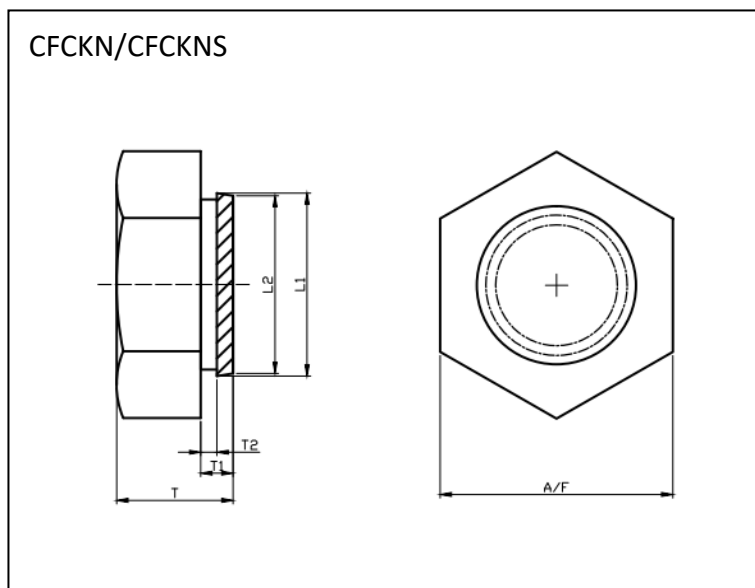


# CLINCHING FASTENERS CO., LTD.

## K NUTS 六角壓鉚螺母(Type C)



**Material 材質 :** Steel 鋼 (CFCKN) / Stainless Steel 不鏽鋼 (CFCKNS)

**Finish 表面:** Cr3+ Zinc 三價鋅 (CFCKN) / Plain 原色 (CFCKNS)

CFCKN / CFCKNS

Dimensions: ISO metric/mm

Part Code 產品編號	Thread Size 螺紋尺寸	Sheet Thickness 板厚	A/F ±0.1	T ±0.13	T1 +0 -0.13	T2	L1 ±0.13	L2 +0.05 -0.13	Hole in Sheet "d" 板孔徑
CFCKN-M25 CFCKNS-M25	M2.5	2.0	5.5	3	1.8	1.3	4.7	4.5	4.5
CFCKN-M3 CFCKNS-M3	M3	2.0	5.5	3	1.8	1.3	4.7	4.5	4.5
CFCKN-M4 CFCKNS-M4	M4	2.0	7	4.5	1.8	1.3	5.7	5.5	5.5
CFCKN-M5 CFCKNS-M5	M5	2.0	8	5	1.8	1.3	6.75	6.5	6.5
CFCKN-M6 CFCKNS-M6	M6	2.0	10	5	1.8	1.3	8.3	8	8